



QUALITY
CHANGES
THE
WORLD

QUALITY CHANGES THE WORLD

SANY



QUALITY CHANGES THE WORLD



**SANY TOWER CRANE
SYT250(T7527-12)**

SANY HEAVY INDUSTRY CO.,LTD.

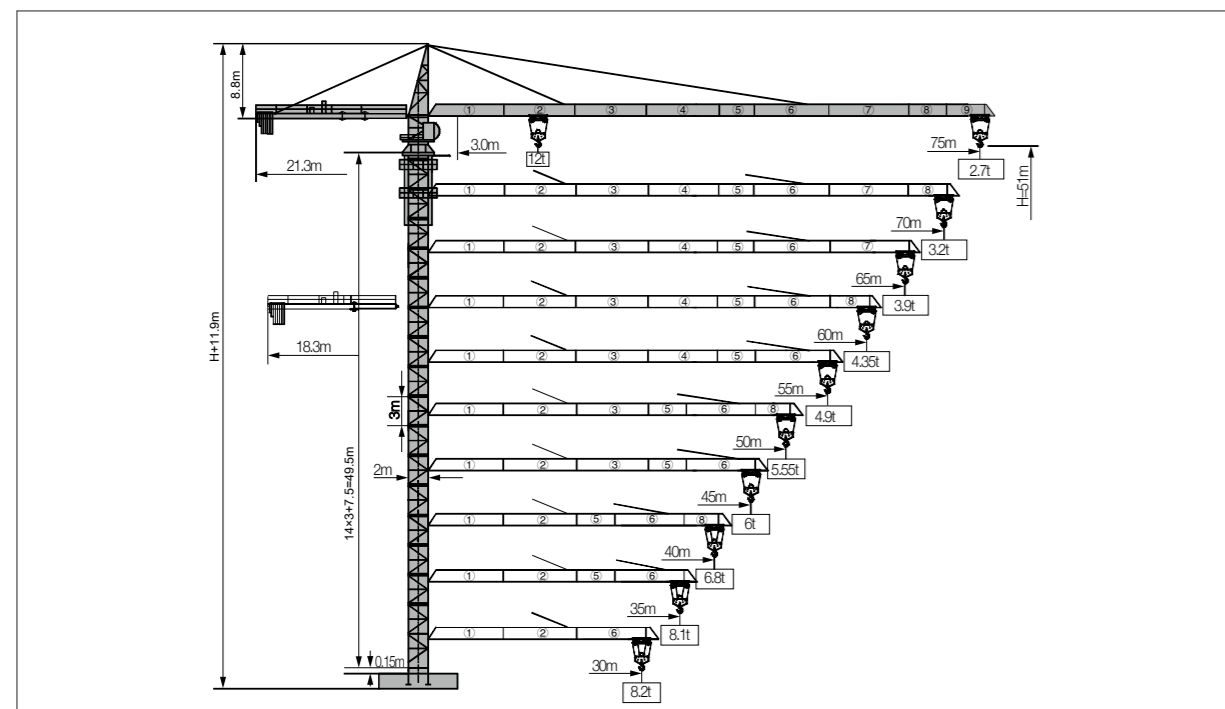
Address: SANY Industrial Park, Economic and Technological Development Zone,
Changsha, Hunan, China.
Service Hotline: +0086-4006-098-318
Email: crd@sany.com.cn
For more information, please visit: www.sanygroup.com

For our consistent improvement in technology, specifications may change without notice.
The machines illustrated may show optional equipment which can be supplied at additional cost.

Distributed By:



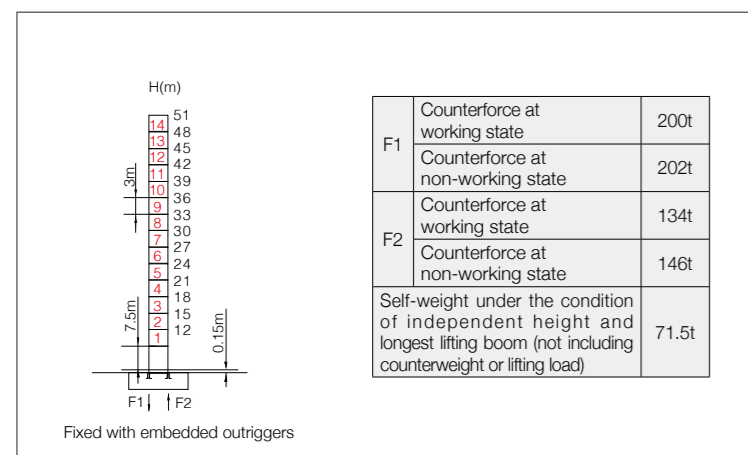
Jib Length & Tip Load



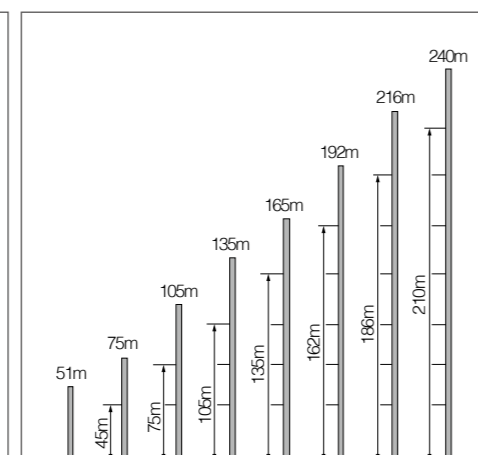
Counter-jib Ballast

Boom length (m)	Balance jib length(m)	Total weight of counterweight (kg)	4300kg counterweight (blocks)	2350kg counterweight (blocks)	1700kg counterweight (blocks)
75	21.3	23600	4	2	1
70	21.3	21900	4	2	0
65	21.3	21250	4	1	1
60	18.3	24250	4	3	0
55	18.3	23200	5	0	1
50	18.3	18900	4	0	1
45	18.3	17600	3	2	0
40	18.3	14600	3	0	1
35	18.3	13300	2	2	0
30	18.3	8600	2	0	0

Masts



Anchorage

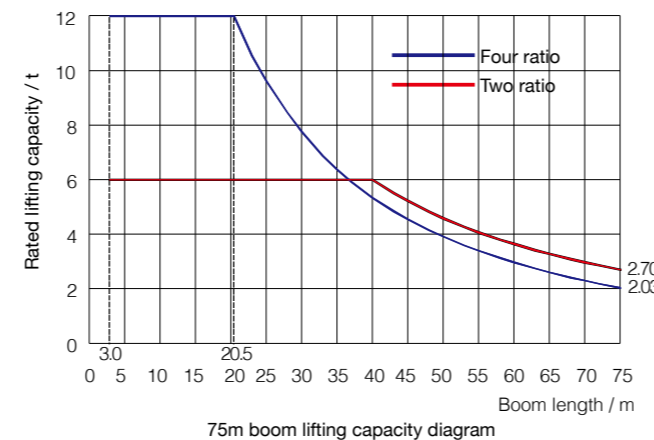


Load diagrams

Range	Max. lifting capacity	18	20	23	25	28	30	33	35	37	40	43	45
75m	3.0~40.0m/6t					8.00						5.51	5.22
	3.0~20.5m/12t	12.00	10.55	9.62	8.46	7.76	6.87	6.37	5.93	5.34	4.84	4.55	
	3.0~42.3m/6t					6.00						5.89	5.58
70m	3.0~21.7m/12t	12.00	11.18	10.23	9.04	8.31	7.37	6.84	6.37	5.75	5.22	4.91	
	3.0~45.8m/6t					6.00						5.80	5.46
	3.0~23.5m/12t	12.00		11.10	9.79	9.14	8.13	7.55	7.04	6.37	5.80	5.46	
	3.0~46.0m/6t					6.00						7.47	7.08
60m	3.0~23.6m/12t	12.00		11.17	9.86	9.20	8.19	7.61	7.09	6.42	5.84	5.50	
	3.0~46.5m/6t					6.00						5.80	5.46
	3.0~24.2m/12t	12.00		11.59	10.12	9.31	8.28	7.69	7.17	6.49	5.91	5.57	
55m	3.0~46.8m/6t					6.00						5.80	5.46
	3.0~24.4m/12t	12.00		11.70	10.21	9.39	8.36	7.77	7.24	6.56	5.97	5.62	
50m	3.0~45.0m/6t					6.00						5.80	5.46
	3.0~25.0m/12t	12.00		10.51	9.67	8.60	8.00	7.46	6.76	6.16	5.80	5.46	
45m	3.0~40.0m/6t					6.00						5.80	5.46
	3.0~25.1m/12t	12.00		10.56	9.72	8.65	8.04	7.50	6.80			5.80	5.46
40m	3.0~35.0m/6t					6.00						5.80	5.46
	3.0~25.2m/12t	12.00		10.63	9.78	8.71	8.1					5.80	5.46
35m	3.0~30.0m/6t					6.00						5.80	5.46
	3.0~21.9m/12t	12.00	11.34	10.25	8.93	8.2						5.80	5.46

Range	Max. lifting capacity	48	50	53	55	58	60	63	65	68	70	72	75
75m	3.0~40.0m/6t	4.82	4.58	4.26	4.07	3.80	3.64	3.41	3.28	3.09	2.97	2.86	2.70
	3.0~20.5m/12t	4.15	3.91	3.59	3.40	3.13	2.97	2.74	2.60	2.41	2.30	2.18	2.03
70m	3.0~42.3m/6t	5.16	4.91	4.57	4.36	4.08	3.91	3.67	3.52	3.32	3.20		
	3.0~21.7m/12t	4.49	4.24	3.90	3.69	3.41	3.24	3.00	2.85	2.65	2.53		
65m	3.0~45.8m/6t	5.68	5.40	5.04	4.81	4.51	4.32	4.06	3.90				
	3.0~23.5m/12t	5.00	4.73	4.36	4.14	3.83	3.65	3.39	3.23				
60m	3.0~46.0m/6t	5.71	5.44	5.07	4.84	4.54	4.35						
	3.0~23.6m/12t	5.04	4.77	4.40	4.17	3.87	3.68						
55m	3.0~46.5m/6t	5.78	5.50	5.13	4.90								
	3.0~24.2m/12t	5.11	4.83	4.45	4.23								
50m	3.0~46.8m/6t	5.83	5.55										
	3.0~24.4m/12t	5.16	4.88										

Load Capacity Diagram



Mechanisms

	Model	Power	Speed
Slewing	SHJ120A7.5TP SHJ120A7.5TFP	2x7.5kW	0~0.75r/min
Trolleying	SXJ75.70P	7.5kW	0~80m/min
Lifting	55QP30	55kW	0~88m/min
Power voltage	380V(±10%)	Power frequency	50Hz

Note: If working rope capacity is greater than 540m, please contact the manufacturer.

Packing List

No.	Name	Shape	L(m)	B(m)	H(m)	Weight of single piece (t)	Qty.
1	Jib systemI		10.22	1.96	1.73	2.30	1
2	Jib systemII		10.21	1.70	1.67	1.65	1
3	Jib systemIII		10.21	1.70	1.62	1.32	1
4	Jib systemIV		10.21	1.70	1.62	1.20	1
5	Jib systemV		5.21	1.70	1.62	0.65	1
6	Jib systemVI		10.21	1.70	1.65	1.30	1
7	Jib systemVII		10.21	1.70	1.60	1.08	1
8	Jib systemVIII		5.21	1.70	1.60	0.46	1
9	Jib systemIX		5.21	1.70	1.60	0.43	1
10	Jib systemX		0.97	1.88	1.80	0.17	1
11	Tower cap		8.78	1.87	2.57	2.80	1
12	Slewing mast		2.27	1.96	3.04	2.57	1
13	Hook		1.65	0.27	1.83	0.38	1
14	Climbing frame		7.67	2.79	2.62	4.16	1
15	Slewing assembly		2.62	2.62	2.52	4.74	1
16	Luffing dolly		3.28	1.91	1.00	0.75	1
17	Counter- jib sectionI		7.48	1.80	0.86	1.83	1
18	Counter- jib sectionII		3.24	1.80	0.86	0.88	1
19	Counter- jib sectionIII		10.13	1.80	0.86	2.40	1
20	Basic section		1.85	1.20	2.20	0.40	1
21	Strengthen section		7.76	2.10	2.11	4.18	1
22	Standard section		3.53	2.21	0.70	1.45	14
23	Lifting mechanism		3.24	2.25	1.65	3.20	1